

COOPERATIVE EXTENSION WORK IN  
 AGRICULTURE AND HOME ECONOMICS  
 AGRICULTURAL EXTENSION SERVICE  
 UNIVERSITY OF ARIZONA  
 UNITED STATES DEPARTMENT OF AGRICULTURE COOPERATING

COMMUNITY HALL  
 EX. 5606  
 SHEET 1 OF 2

SECTION C-C THROUGH STAIRS MARKED H&I

SECTION G-G (INT. WALL)

**General Notes**

1. Windows: A triangular ventilator of the fixed lower type shall be provided in the exterior wall of each room. The ventilator shall be made using a 6" x 6" galvanized steel mesh with 1/2" mesh galvanized wire. The front entrance doors are to be home made built up doors, and should be about 3" thick using single V and G lumber for the finished exterior surface and large home made hinges, as shown, shall be used to hang doors. All other doors are to be wood panel. See floor plan for size.

2. Windows: Windows A shall be 2'-0" x 5'-2" and consist of 12 lights 10" x 14". They are to be placed 3" above the Main Floor.

3. Windows B 12 lights 10" x 12" placed 3" above Main Floor.

4. Windows C 12 lights 10" x 12" placed 3" above Main Floor.

5. Windows D 12 lights 10" x 12" placed 3" above Main Floor.

6. Windows E 12 lights 10" x 12" placed 3" above Main Floor.

7. Windows F 12 lights 10" x 12" placed 3" above Main Floor.

8. Windows G 12 lights 10" x 12" placed 3" above Main Floor.

9. Windows H 12 lights 10" x 12" placed 3" above Main Floor.

10. Windows I 12 lights 10" x 12" placed 3" above Main Floor.

11. Windows J 12 lights 10" x 12" placed 3" above Main Floor.

12. Windows K 12 lights 10" x 12" placed 3" above Main Floor.

13. Windows L 12 lights 10" x 12" placed 3" above Main Floor.

14. Windows M 12 lights 10" x 12" placed 3" above Main Floor.

15. Windows N 12 lights 10" x 12" placed 3" above Main Floor.

16. Windows O 12 lights 10" x 12" placed 3" above Main Floor.

17. Windows P 12 lights 10" x 12" placed 3" above Main Floor.

18. Windows Q 12 lights 10" x 12" placed 3" above Main Floor.

19. Windows R 12 lights 10" x 12" placed 3" above Main Floor.

20. Windows S 12 lights 10" x 12" placed 3" above Main Floor.

21. Windows T 12 lights 10" x 12" placed 3" above Main Floor.

22. Windows U 12 lights 10" x 12" placed 3" above Main Floor.

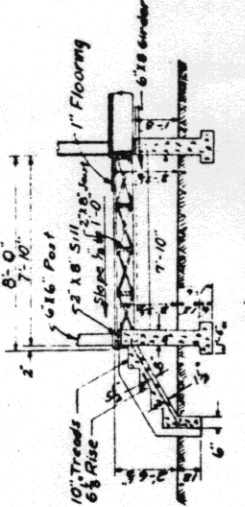
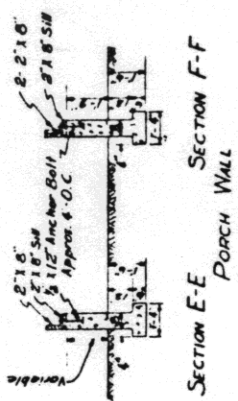
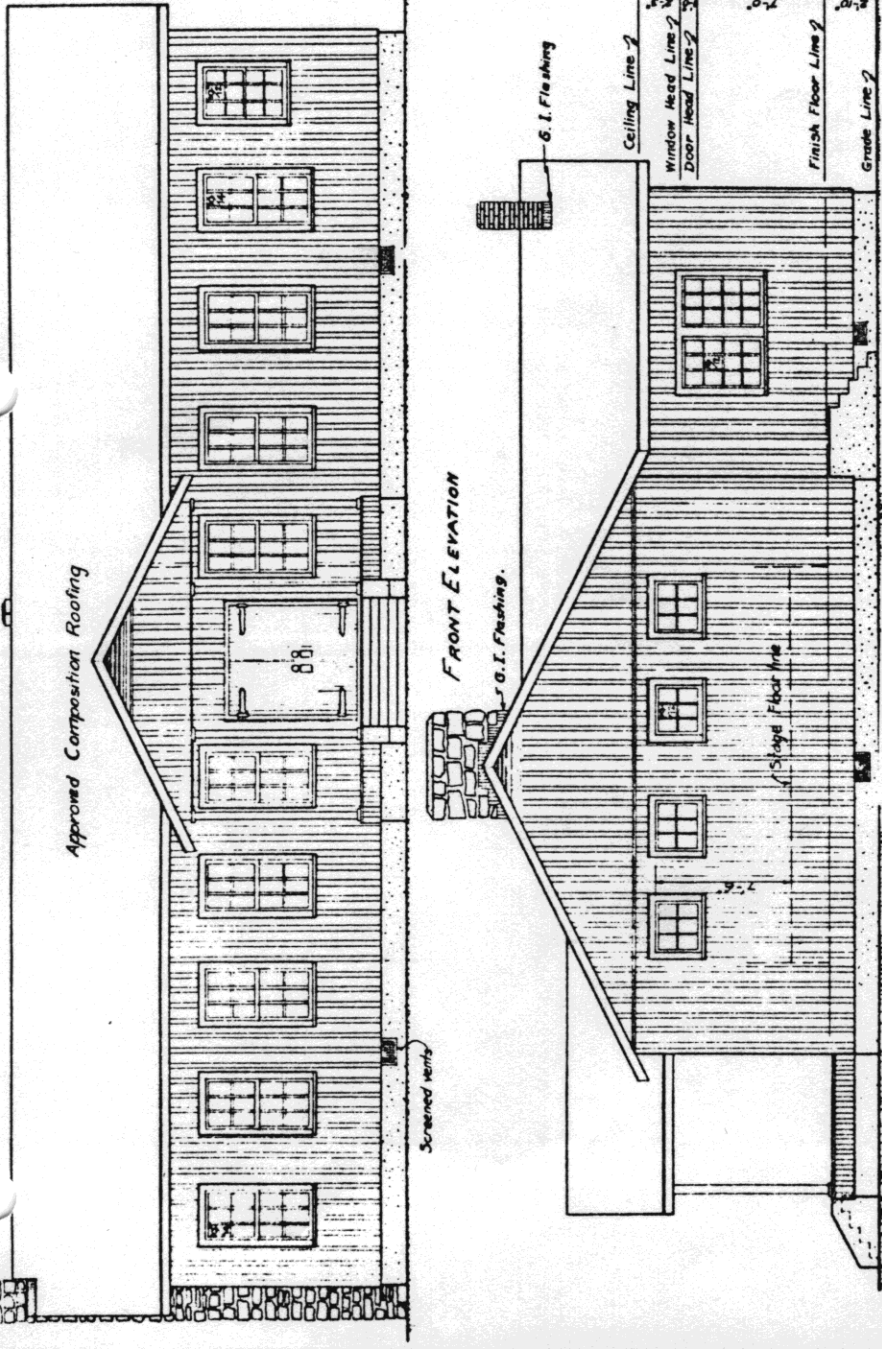
23. Windows V 12 lights 10" x 12" placed 3" above Main Floor.

24. Windows W 12 lights 10" x 12" placed 3" above Main Floor.

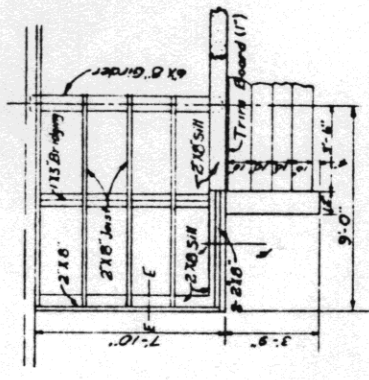
25. Windows X 12 lights 10" x 12" placed 3" above Main Floor.

26. Windows Y 12 lights 10" x 12" placed 3" above Main Floor.

27. Windows Z 12 lights 10" x 12" placed 3" above Main Floor.

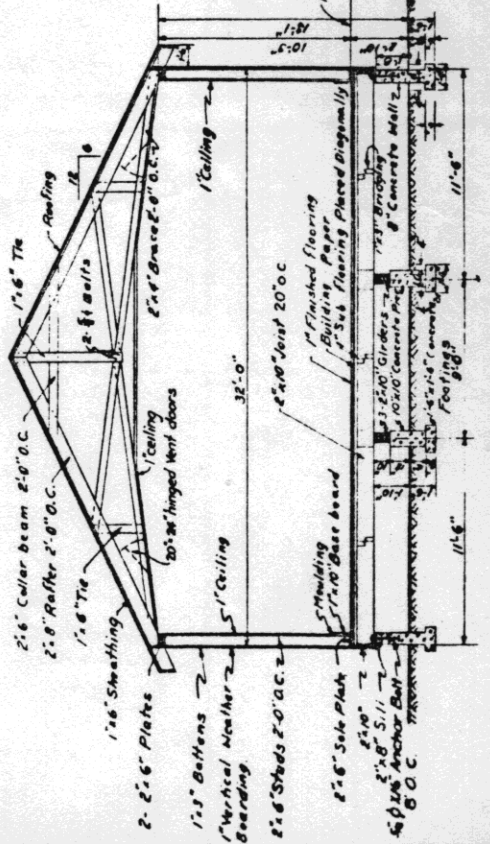


SECTION D-D THROUGH FRONT PORCH & STEPS

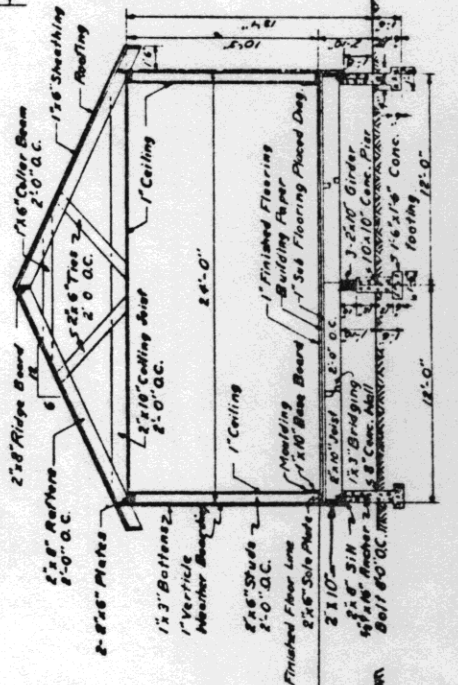


HALF PLAN PORCH FLOOR JOIST

END ELEVATION



SECTION A-A FRAMING



SECTION B-B FRAMING